

## Fabric Specifications

### FLAME RETARDANT

- ▶ BS EN 1021-1:2006 1&2 (Cigarette & Match)
- ▶ BS 7176 Low Hazard
- ▶ IMO Annex 1 Part 8

### BREATHABLE

Moisture vapour permeable

### MARTINDALE

Severe Contract > 140,000

### COMPOSITION

100% Treated polyester

### WEIGHT

Approx. 400GSM ±5%

### WIDTH

140cm (55") wide

## Cleaning

- ▶ Use a vacuum cleaner or soft brush to remove dust and solid particles.
- ▶ Wipe clean with a damp cloth or soap based cleaner. All soap residues must be rinsed from the fabric.
- ▶ Do not machine wash.
- ▶ Poorly fixed clothing dyes, e.g. denim, and biro pens will cause permanent staining.

## Technical Information

- ▶ Please note that all fabric offered is subject to minor tolerance in respect of shade and other slight variations.
- ▶ Seam performance is dependent on construction and needle and thread type. We advise the correct sewing advice be taken.
- ▶ Technical specifications may be amended, please check for the latest information.

## Samples and Enquires

You can contact us for samples, order enquiries or information about any of our other workplace fabric ranges here:

**Agua Fabrics Ltd, Hyde House, The Hyde, London NW9 6LH**

T +44 (0)20 8205 0050

E [info@aguafabrics.com](mailto:info@aguafabrics.com)

[aguafabrics.com](http://aguafabrics.com)



Cig&Match



Phthalate Free



Martindale Abrasion Severe Contract



REACH Compliant

# CHEA

@work  
by AGUA



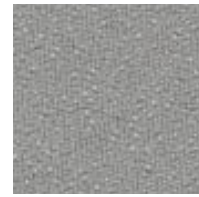
@work by AGUA  
Chea / Mustard



@work by AGUA  
Chea / Tan



@work by AGUA  
Chea / Stone



@work by AGUA  
Chea / Cloud



@work by AGUA  
Chea / Sky



@work by AGUA  
Chea / Petrol



@work by AGUA  
Chea / Jade



@work by AGUA  
Chea / Pistachio



@work by AGUA  
Chea / Burnt Orange



@work by AGUA  
Chea / Cherry



@work by AGUA  
Chea / Latte



@work by AGUA  
Chea / Slate



@work by AGUA  
Chea / Seal



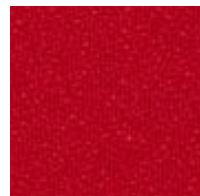
@work by AGUA  
Chea / Sapphire



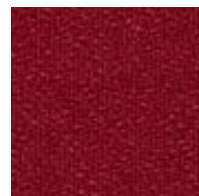
@work by AGUA  
Chea / Seagrass



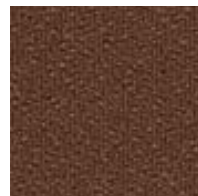
@work by AGUA  
Chea / Mid Green



@work by AGUA  
Chea / Crimson



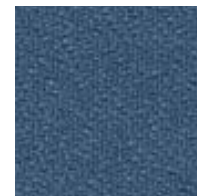
@work by AGUA  
Chea / Red



@work by AGUA  
Chea / Mocha



@work by AGUA  
Chea / Dark Grey



@work by AGUA  
Chea / Ocean



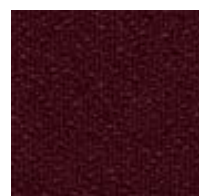
@work by AGUA  
Chea / Marine



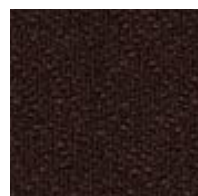
@work by AGUA  
Chea / Teal



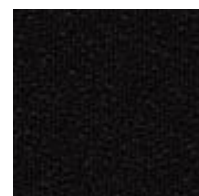
@work by AGUA  
Chea / Leaf



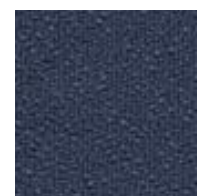
@work by AGUA  
Chea / Claret



@work by AGUA  
Chea / Chocolate



@work by AGUA  
Chea / Black



@work by AGUA  
Chea / Ink



@work by AGUA  
Chea / Midnight



@work by AGUA  
Chea / Lincoln

WORKPLACE FABRICS

WORKPLACE FABRICS