

WORKPLACE FABRICS

@work

by AGUA

STOL  
COLLECTION

### Fabric Specifications

#### FLAME RETARDANT

- ▶ BS EN 1021-1:2006 1&2 (Cigarette & Match)
- ▶ BS 7176 Medium Hazard (Crib5)
- ▶ BS 5852 Crib 5
- ▶ IMO Annex 1 Part 8

#### MARTINDALE

Severe Contract > 400,000

#### COMPOSITION

2% Vinyl acrylic  
71% PVC  
9% Cotton  
18% Polyester

#### STAIN RESISTANT

Excellent stain removal has been observed for grease, ink, blood, urine, coffee, iodine, betadine, ketchup, chewing gum, chocolate, grape juice.

#### ANTI-MICROBIAL

Resistant to microbial or fungal growth including Salmonella, E Coli and MRSA.

#### WATERPROOF

Hydrostatic Head BS3424  
> 1 metre

#### WEIGHT

650gm ±5%

#### WIDTH

140cm (55") wide

### Cleaning

- ▶ Use a vacuum cleaner or soft brush to remove dust and solid particles.
- ▶ Wipe clean with a damp cloth or soap based cleaner. All soap residues must be rinsed from the fabric.
- ▶ Do not machine wash.
- ▶ Poorly fixed clothing dyes, e.g. denim, and biro pens will cause permanent staining.

### Technical Information

- ▶ Please note that all fabric offered is subject to minor tolerance in respect of shade and other slight variations.
- ▶ Seam performance is dependent on construction and needle and thread type. We advise the correct sewing advice be taken.
- ▶ Technical specifications may be amended, please check for the latest information.

### Samples and Enquires

You can contact us for samples, order enquiries or information about any of our other workplace fabric ranges here:

**Agua Fabrics Ltd, Hyde House, The Hyde, London NW9 6LH**

T +44 (0)20 8205 0050

E info@aguafabrics.com

[aguafabrics.com](http://aguafabrics.com)

STOL  
COLLECTION



Anti-Microbial



Stain Resistant



Cig&Match & Medium Hazard



Waterproof



Bleach Cleanable



Martindale Abrasion Severe Contract



Phthalate Free



REACH Compliant

STOL v1.1

WORKPLACE FABRICS

@work

by AGUA

# STOL



@work by AGUA  
Stol / Lime



@work by AGUA  
Stol / Rose



@work by AGUA  
Stol / Mustard



@work by AGUA  
Stol / Ivory



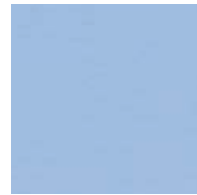
@work by AGUA  
Stol / Beige



@work by AGUA  
Stol / Pebble



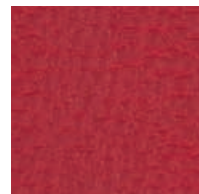
@work by AGUA  
Stol / Wedgwood



@work by AGUA  
Stol / Sky



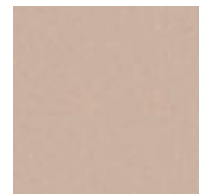
@work by AGUA  
Stol / Spearmint



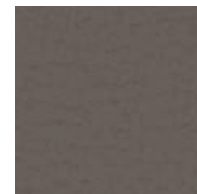
@work by AGUA  
Stol / Scarlet



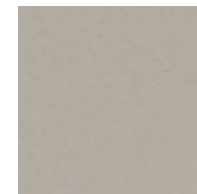
@work by AGUA  
Stol / Burnt Orange



@work by AGUA  
Stol / Mushroom



@work by AGUA  
Stol / Silver



@work by AGUA  
Stol / Grey



@work by AGUA  
Stol / Ink



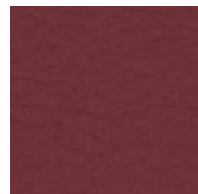
@work by AGUA  
Stol / Azure



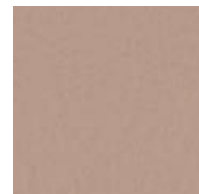
@work by AGUA  
Stol / Teal



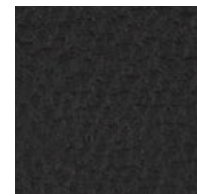
@work by AGUA  
Stol / Purple



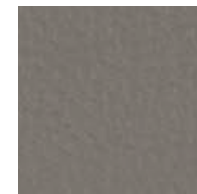
@work by AGUA  
Stol / Claret



@work by AGUA  
Stol / Mink



@work by AGUA  
Stol / Black



@work by AGUA  
Stol / Steel



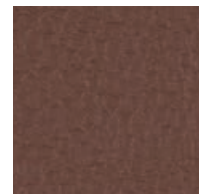
@work by AGUA  
Stol / Blue



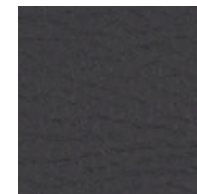
@work by AGUA  
Stol / Sapphire



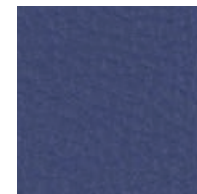
@work by AGUA  
Stol / Emerald



@work by AGUA  
Stol / Chestnut



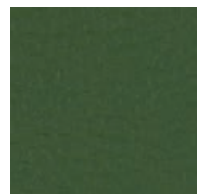
@work by AGUA  
Stol / Graphite



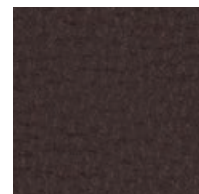
@work by AGUA  
Stol / Marine



@work by AGUA  
Stol / Royal



@work by AGUA  
Stol / Grass



@work by AGUA  
Stol / Brown