

# AGUA

PERFORMANCE UPHOLSTERY FABRICS

## Parody Linen Collection

Practical faux leather with a textured linen emboss

## Parody Linen

Practical faux leather with a textured linen emboss

### Perfect for:

Commercial, cruise, healthcare, hospitality and leisure.

### Fabric Specifications

Flame retardant	BS7176 Crib 5, BS EN 1021-1:2006 1&2, BS5852 Crib 5, IMO Annex 1 Part 8.
Anti-bacterial/Anti-fungal	Resistant to microbial or fungal growth including Salmonella, E Coli and MRSA.
Waterproof	Hydrostatic Head BS3424 > 1 metre.
Martindale	Severe Contract > 100,000.
Stain resistant	Excellent stain removal has been observed for grease, ink, blood, urine, coffee, iodine, betadine, ketchup, chewing gum, chocolate, grape juice.
Composition	2% Vinyl Acrylic, 80% PVC, 9% Cotton, 9% Polyester.
Width	140cm (55") wide.
Weight	650g ±5%.

### Technical Information

- We recommend a minimum of 32 stitches per 10 cm (8 stitches per inch) and seams must have a minimum 12mm (0.5") bite on the fabric.
- Can be stitched, tacked and glued. Cannot be heat welded.
- Please note that all fabric offered is subject to minor tolerance in respect of shade and other slight variations.
- Parody Linen can be colour co-ordinated with other Agua collections to produce stunning dual textured finishes.
- Bespoke colours can be produced subject to minimum quantity orders.
- Technical specifications may be amended, please check for the latest information.
- Please ask if you require a sample of the current batch available but be aware that stock can move quickly.

### Fabric Care

- Poorly fixed clothing dyes, e.g. denim, will cause permanent staining. Most stains can be removed using cold/warm water and a clean microfibre cloth.
- Use a vacuum cleaner or soft brush to remove dust and solid particles.
- Wipe frequently with a damp cloth to maintain the appearance of the fabric.
- Remove all stains immediately before they set. All spillages should be removed immediately with a clean absorbent cloth.
- If soap based cleaners are used, all soap residues must be rinsed from the fabric.
- Can be steam cleaned in situ.
- Do not machine wash or dry clean.
- Can be cleaned with mild Hypochlorite solutions (10,000 ppm of available chlorine) e.g.: Haz Tabs, Chlor-Clean. Continued use may cause discolouration and surface damage.
- Always try cleaning products on a hidden piece of fabric to test suitability.
- Do not use: solvents, abrasives, chemical agents, waxes or polishes as this will damage the surface of the fabric.
- Do not use marker pens on the back of the fabric.
- Please refer to the Parody Linen Fabric Technical Specifications PDF download on the Agua website for further details.

### Our Environmental Policy

Our products have always been phthalate free and Reach\* compliant. Our processes are non-toxic and the methods used during manufacture and finishing ensure that potentially hazardous accidental cross contamination is minimised to the greatest degree possible. All our fabrics meet the stringent Oeko-Tex\*\*

standards, regardless of origin, so are free from harmful chemicals and safe for human use.

\* Registration, Evaluation, Authorisation and Restriction of Chemicals (EU regulation: 18th December 2006)

\*\* See more: [www.oeko-tex.com](http://www.oeko-tex.com)



### Samples and Enquires

You can contact us for samples, order enquiries or information about any of our fabric ranges here:

Agua Fabrics Ltd,  
Hyde House,  
The Hyde, London NW9 6LH  
T +44 (0)20 8205 0050  
E [info@aguafabrics.com](mailto:info@aguafabrics.com)  
[www.aguafabrics.com](http://www.aguafabrics.com)

# AGUA

PERFORMANCE UPHOLSTERY FABRICS



Certificate No. FS 531220



PlanetMark Certified Business



PlanetMark  
Certified  
Business



Anti-Microbial



Bleach  
Cleanable



Fire Retardant  
Crib 5/IMO



Stain  
Resistant



Waterproof



> 100k  
Martindale  
Abrasion  
Severe  
Contract

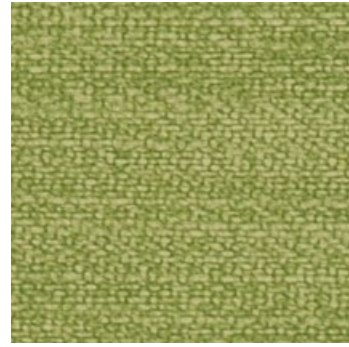


Phthalate  
Free

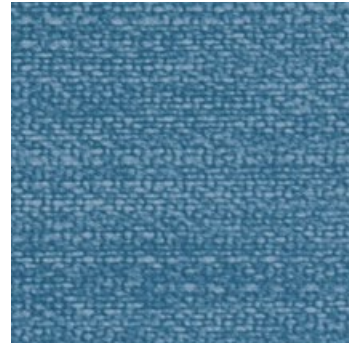


REACH  
Compliant

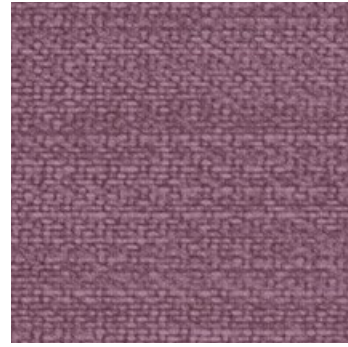




Parody Linen Lime



Parody Linen Denim



Parody Linen Grape



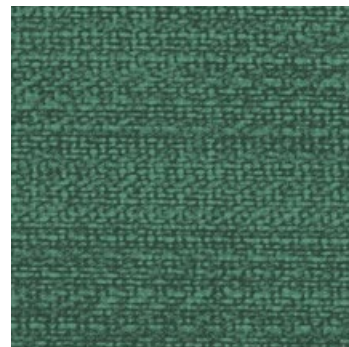
Parody Linen Sand



Parody Linen Light Grey



Parody Linen Cloud



Parody Linen Emerald



Parody Linen Blue



Parody Linen Purple



Parody Linen Gold



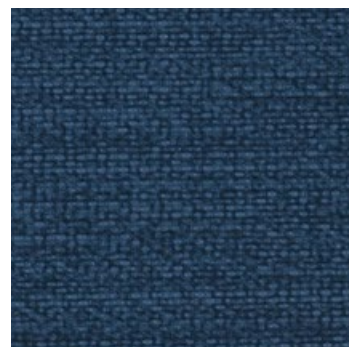
Parody Linen Mink



Parody Linen Slate



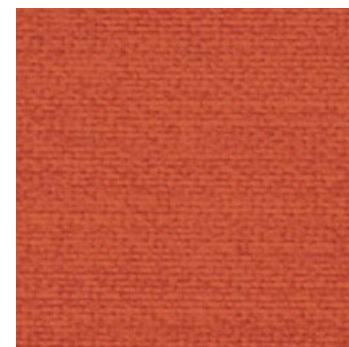
Parody Linen Duck Egg



Parody Linen Midnight



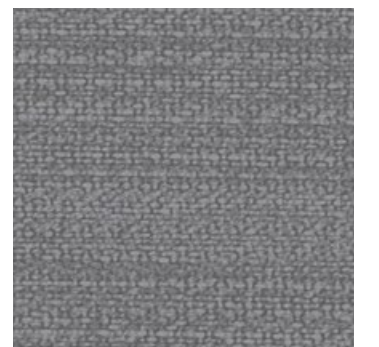
Parody Linen Orchid



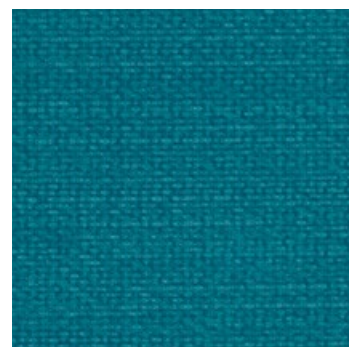
Parody Linen Burnt Orange



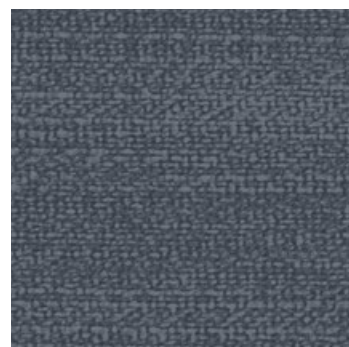
Parody Linen Coffee



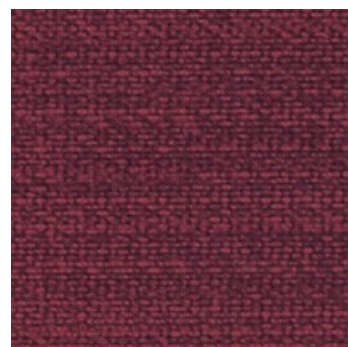
Parody Linen Grey



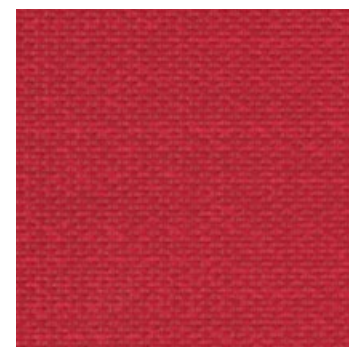
Parody Teal



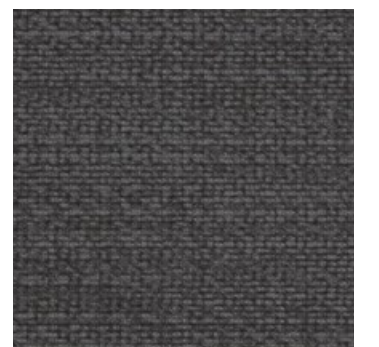
Parody Linen Ink



Parody Linen Plum



Parody Linen Red



Parody Linen Charcoal